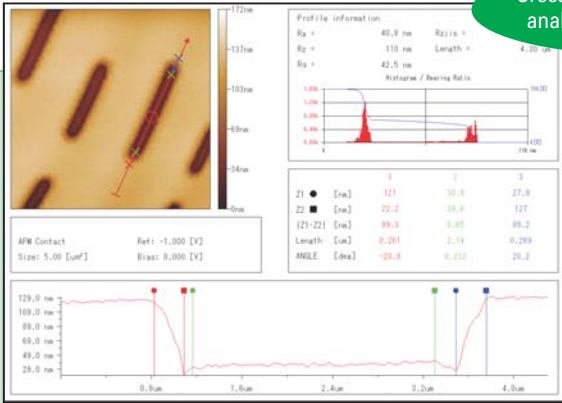


Analysis Software

The SPM analysis software works as a stand-alone system and separately analyzes the last measurement result while the measurement software performs the next measurement. You can install this software in any PC except for an instrument control PC.*

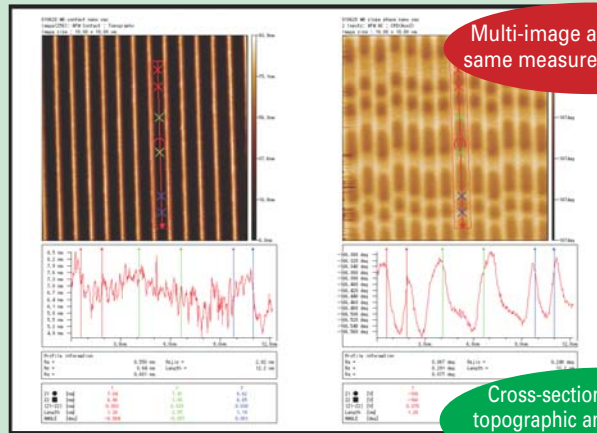
*PC allowing the display of XGA (1024 × 768) or more (including laptop PC)

Cross-section topographic analysis of compact disk



Cross-section/surface roughness analyses

This software can perform cross-section/surface roughness analyses that conform to JIS B 0601: 2001. Analysis results can be directly printed and saved as bitmaps.



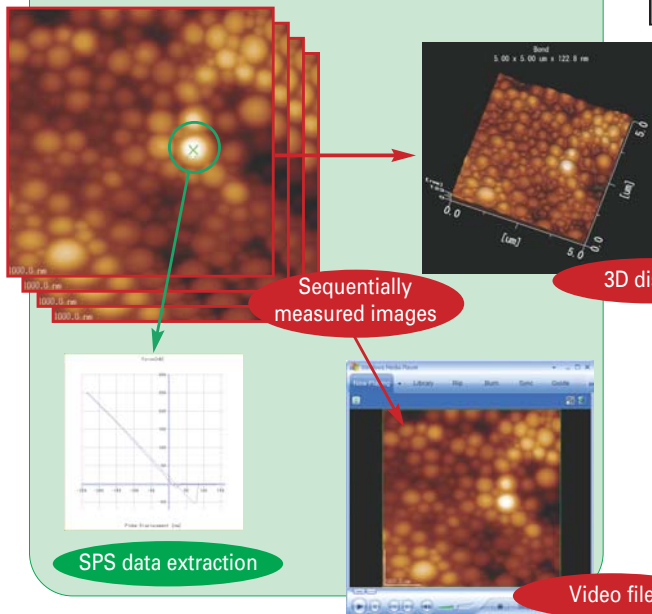
Multi-image analysis at the same measurement position

Cross-section analysis of the topographic and magnetic force images of Magneto-Optical disk

Surface roughness analysis of digital videotape

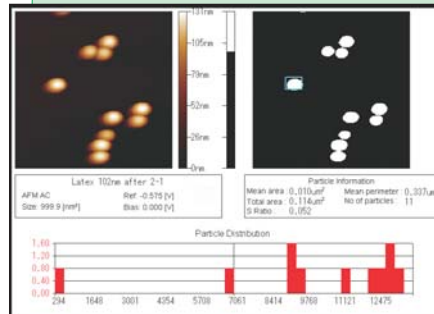
Measurement data processing

In addition to the noise filter for standard image processing, this analysis software includes special data processing functions specific for Multi-mode SPM, such as 3D display, extraction of specific image from SPS mapping data and conversion of sequentially measured images into video files.



Particle analysis

Particle shapes can be extracted from the image and the area and perimeter of each particle are statistically analyzed.



Particle Analyze Control

Num	Area (μm ²)	Perim	Parameter (μm)	Sha
11	200.75	31	29.218	0.1188
12	6670.44	704	275.433	0.087
13	9120.08	1036	321.285	0.083
14	9176.55	1091	321.451	0.089
15	8429.99	1121	326.443	0.087
16	1121.298	1345	370.363	0.092
17	12282.20	1452	375.295	0.087
18	12717.64	1512	383.550	0.096
19	13012.02	1543	389.945	0.096
110	18300.71	1513	379.570	0.094
111	19525.10	1608	404.179	0.093

Order: Position Area Shape Perimeter

Particle analysis of latex particles.

Report editing

Multiple data can be compiled in a report sheet with a comment space, and printed and saved.

