

Delta Tips

NMDT_0070

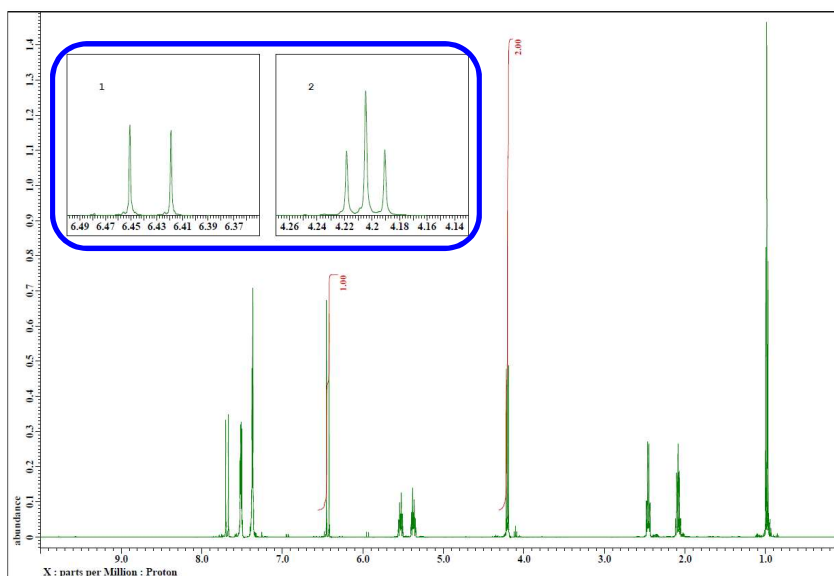
How to Make a Print Layout (3)

NMR data processing software



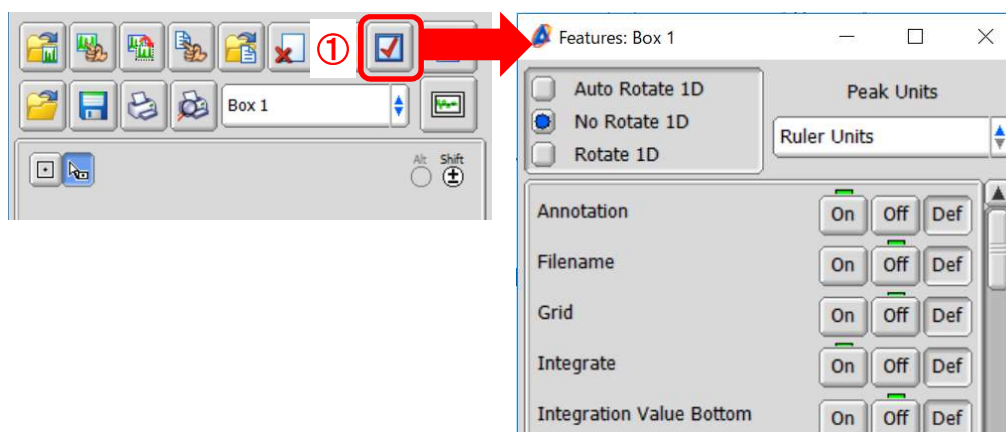
< How to set features of data box (inset) >

In Delta software, it is possible to create and print sophisticated layouts. The **Page Layout Editor** is introduced in NMDT_0068 and NMDT_0069. This issue of Delta Tips explains another function of the **Page Layout Editor**. This function allows us to set features of each data box (inset) to print. In the examples below, we will demonstrate how to hide Y-axis and integrals in insets.



★ For the details on making layouts, refer to the Delta Tips issue titled **How to Make a Print Layout (1)** (⇒NMDT_0068).

① Select a data box and click the **Change Feature** button  to open the **Features** window.



1/3

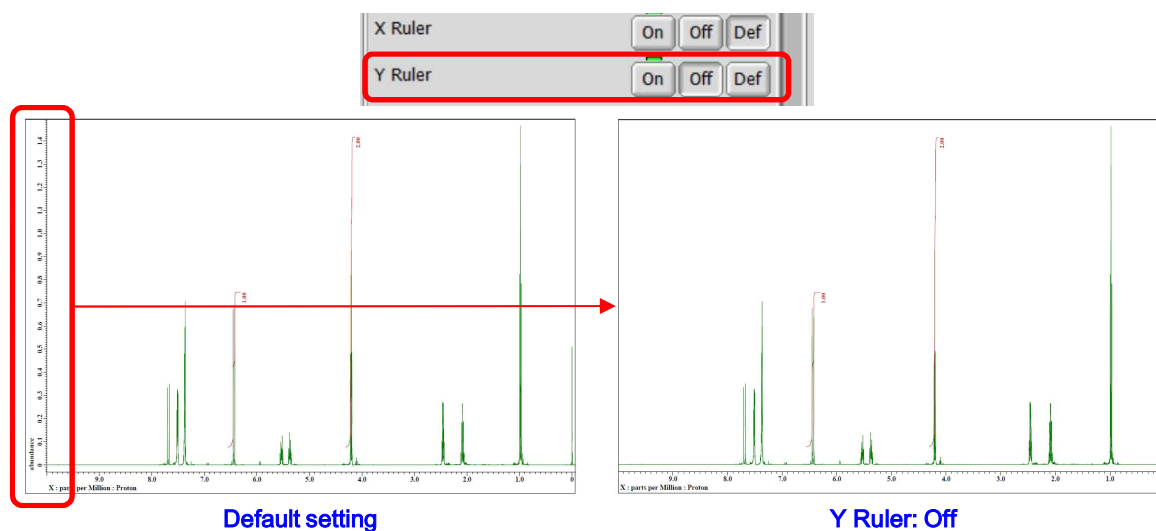
Delta Tips

1) Display/Hide ruler:

X Ruler: Display/hide X-axis

Y Ruler: Display/hide Y-axis

Set **Y Ruler** to **Off** in order to hide Y-axis as shown below.



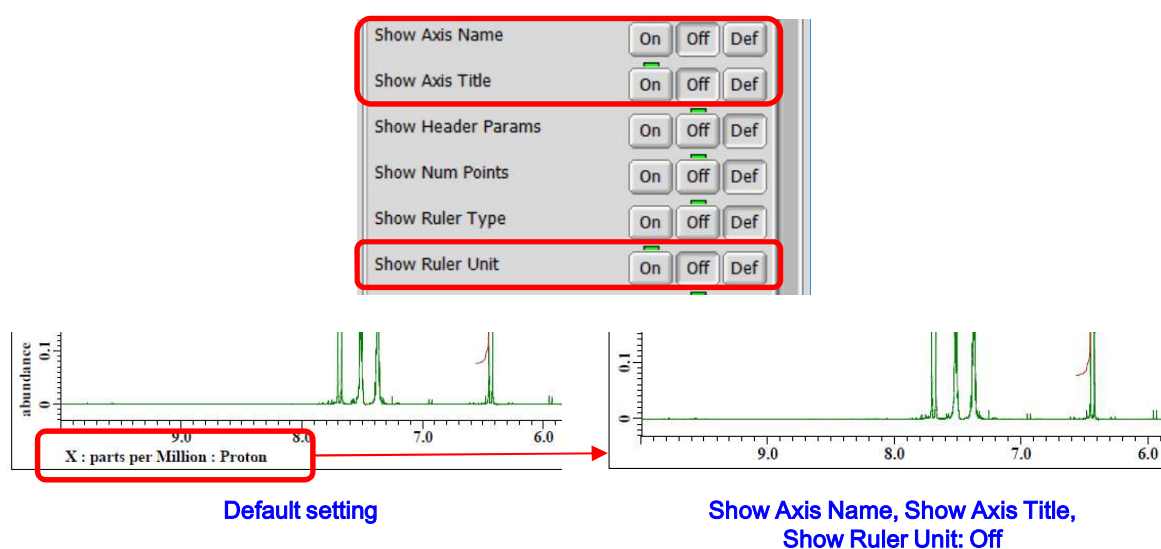
2) Display/ Hide axis name, axis title and ruler unit:

Show Axis Name : Display/hide axis name (X, Y, Z, ...)

Show Axis Title : Display/hide axis title

Show Ruler Unit : Display/hide ruler unit

Set **Show Axis Name**, **Show Axis Title** and **Show Ruler Unit** to **Off** as shown below.





3) Display/ Hide integrals:

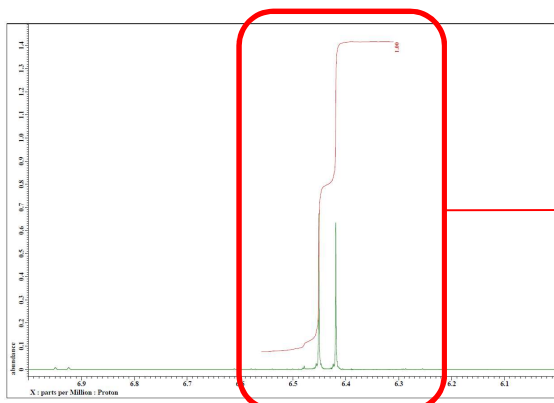
Integrate : Display/hide integrals

Integration Value Bottom : Display integration value in the ruler/ in the data

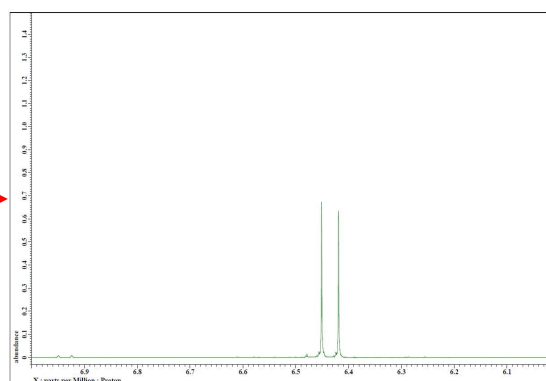
Integration Line : Display/hide integration line

Integration Value : Display/hide integration value

Set **Integrate** to **Off** in order to hide integral curves and integration values.

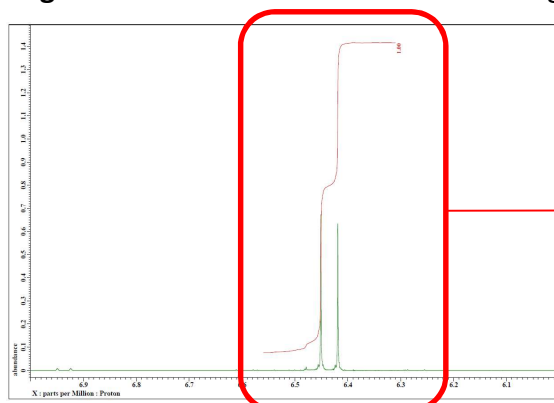


Default setting

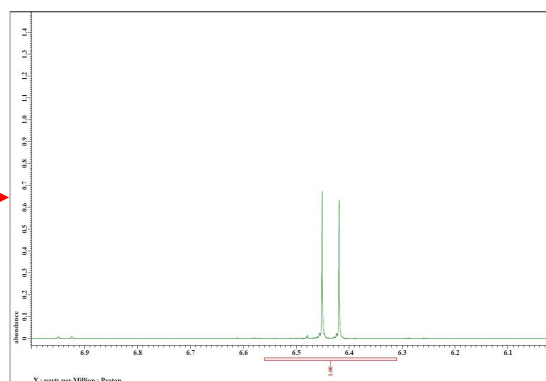


Integrate: Off

Set **Integration Value Bottom** to **On** in order to display integration values in the ruler and **Integration Line** to **Off** in order to hide integration line.



Default setting



Integration Value Bottom: On
Integration Line: Off

★ For the details on saving a layout (template), refer to the Delta Tips issue titled **How to Make a Print Layout (1)** (⇒NMDT_0068).