

Delta Tips

NMDT_0068

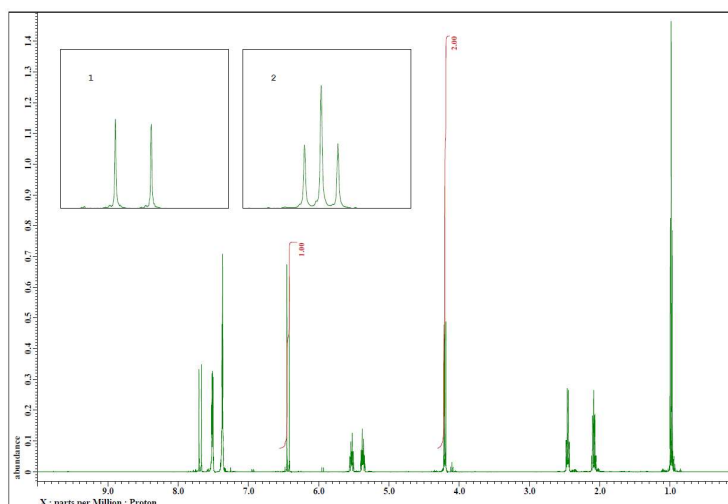
How to Make a Print Layout (1)

NMR data processing software

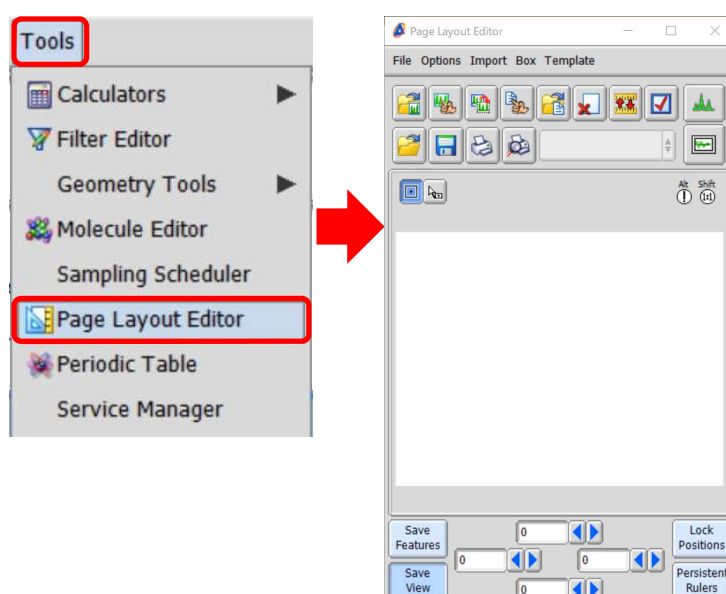


< Set up a layout with multiple plots that refer to the same spectrum >

In Delta software, it is possible to create a print layout with multiple inset plots. This issue of Delta Tips explains functions of the **Page Layout Editor**. As shown in the figure below, the **Page Layout Editor** allows us to create an inset data frame in the main data frame (plot, spectrum). In the example below, the inset plots are zoomed regions of the main ^1H NMR spectrum. These data areas are selected integration intervals in the ^1H NMR spectrum.



① On the menu bar, select **Tools — Page Layout Editor** to open the **Page Layout Editor** window.





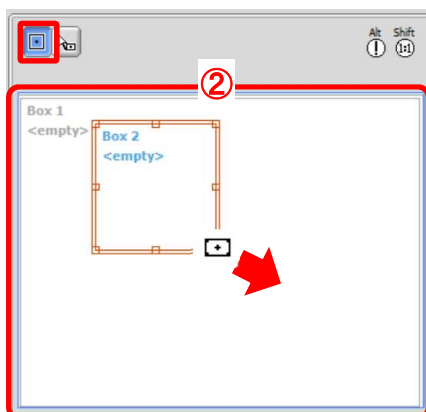
Delta Tips

NMR data processing software

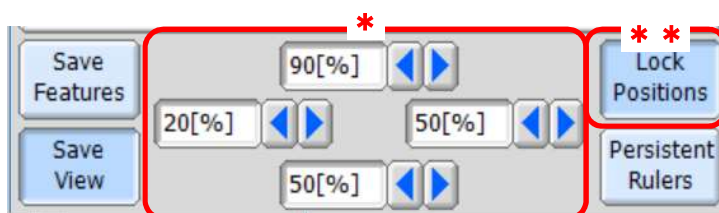
Delta
NMR Software





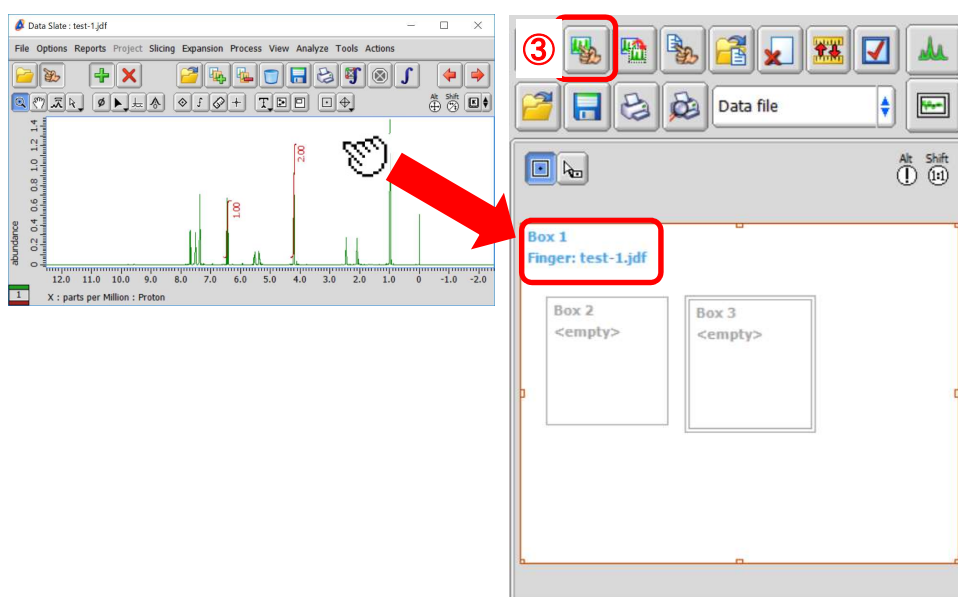
- ② Create a data box. Click the **Region** button  and drag the cursor  over the Layout area to create a new data box.



- ★ It is possible to set the size and position of data box as shown below (*).
- ★ Click the **Lock Positions** button (**) to fix the position of data box.

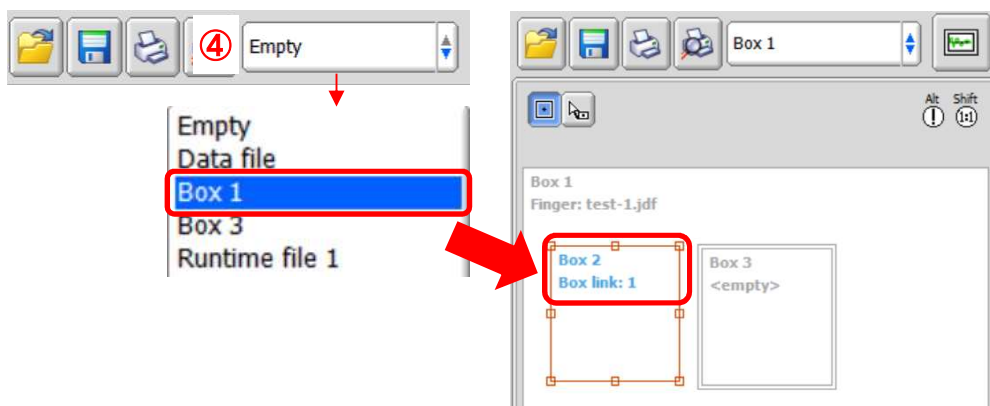



- ③ Select a data box and click the **Select data** button . Then select a data with the cursor  to load this data to the data box. Note that the name of selected data has been displayed in the data box.

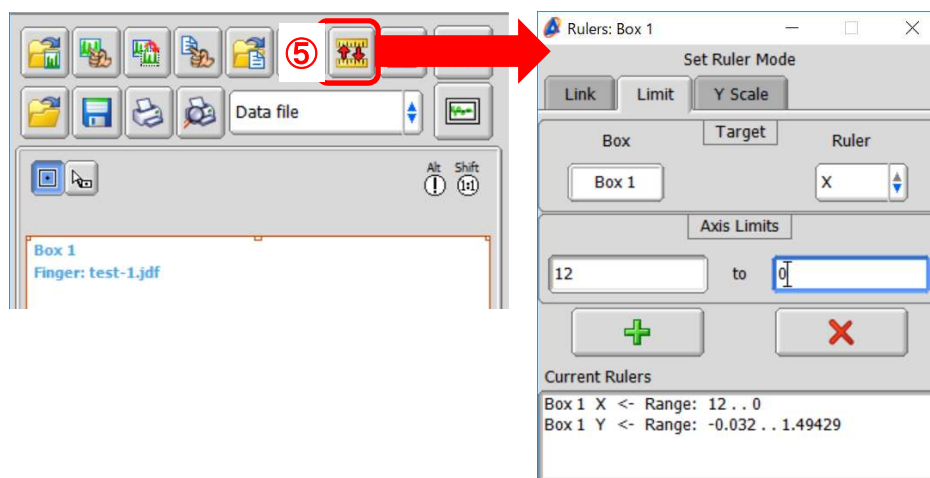



Delta Tips

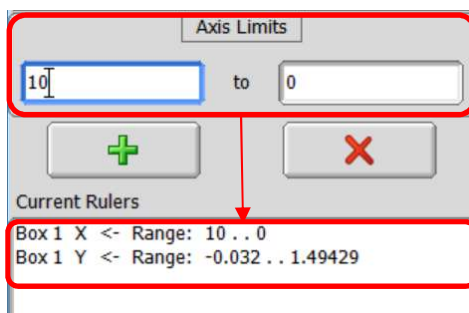
- ④ Link a data box and other data boxes. In the example bellow, select **Box 2** and then select **Box 1** in the list (④) to link **Box 2** and **Box 1**.





- ⑤ Set range. Select a data box and click the **Ruler** button  to display the **Rulers** window.

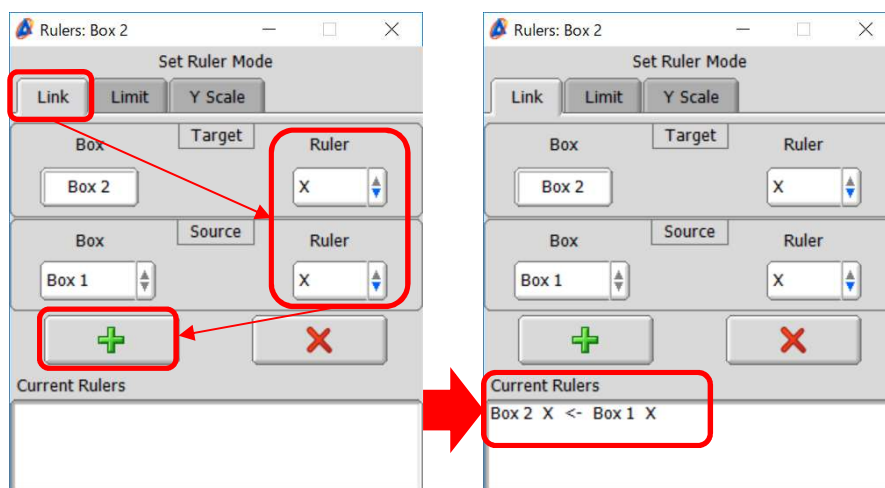



- ⑥ Input a value into the **Axis Limits** and click the **Add** button  to apply the set value. In this example, we have changed the range of 12-0 ppm to 10-0 ppm.

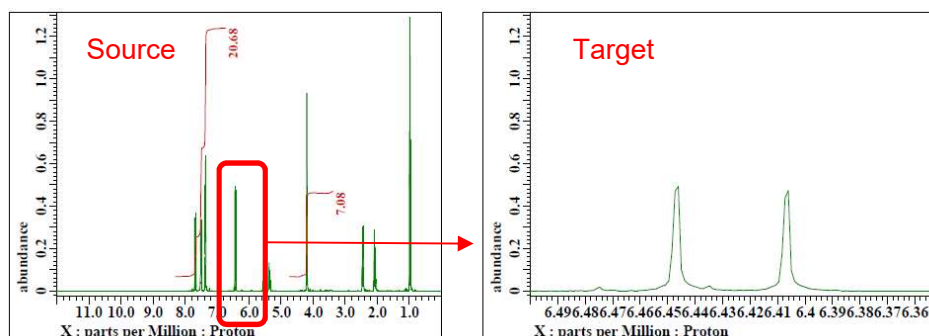


Delta Tips

- ⑦ Set range of inset data. Select a inset data box and click the **Ruler** button . And then select the **Link** tab and select the **Ruler** of each **Target** and **Source** data box. Click the **Add** button  to set this ruler link.

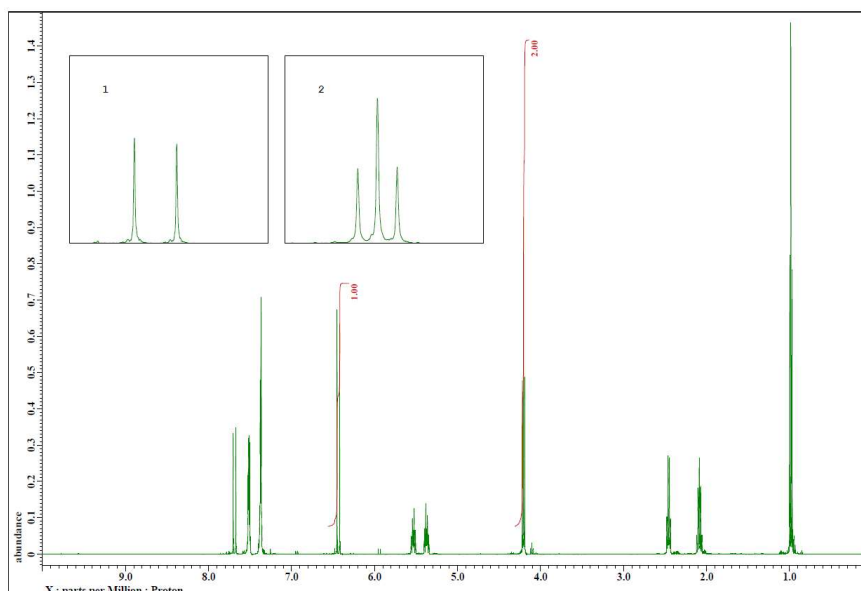


- ⑧ Select the **Limit** tab panel and select the **Ruler** of **Target** data box. And then input a value to the **Axis Limits** and click the **Add** button  to apply the set value. In this example, we have set the range to 6.35-6.5 ppm. This data area is zoomed region of the main ¹H NMR of source data.



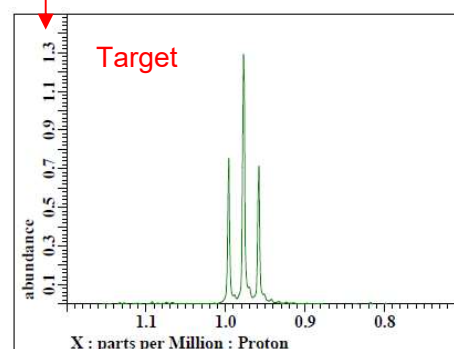
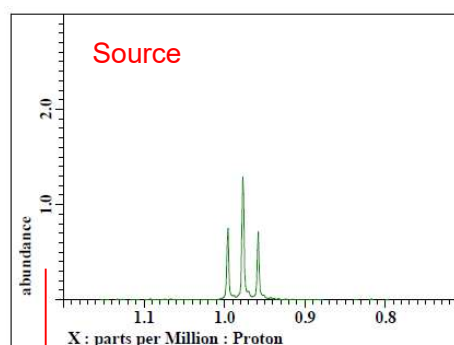
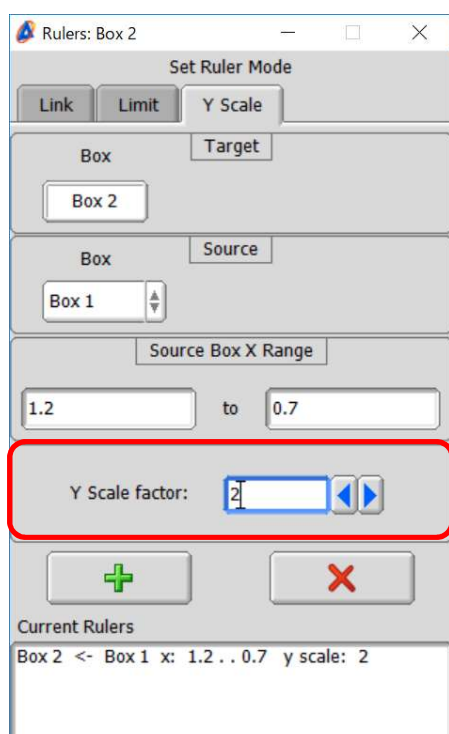
Delta Tips

⑨ Click the **Print** button  to print the data with the created layout.



★ It is also possible to set the axis range by using the Y-axis scaling factor of source data as follows:

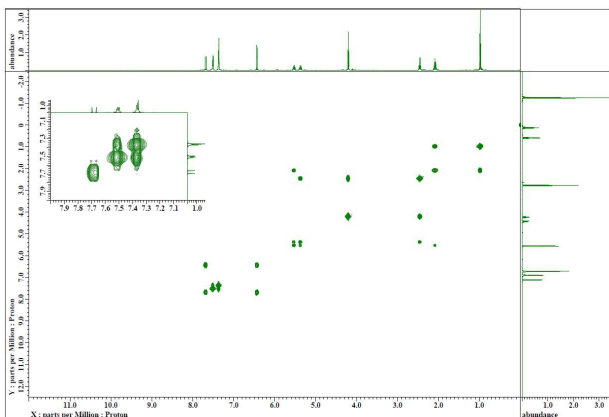
Select the **Y Scale** tab and input a value into the **Y Scale factor** box and click the **Add** button. In this example, we have set the **Y Scale factor** to 2 as follows.



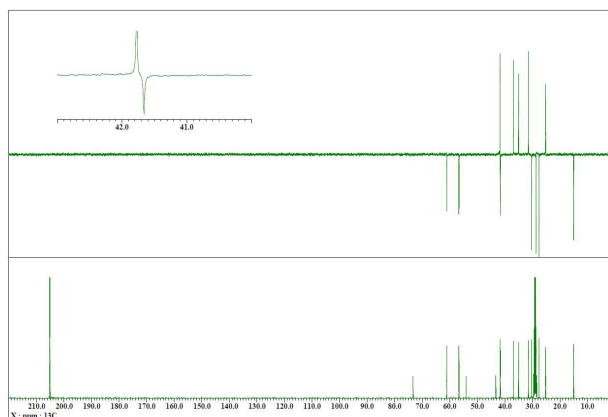
Delta Tips

Examples of layout :

The left-hand layout shows a ^1H - ^1H COSY spectrum and an inset with the same ^1H - ^1H COSY spectrum zoomed in the range of 7-8 ppm. The right-hand layout shows a ^{13}C NMR spectrum (bottom), a DEPT-135 spectrum (top) with an inset showing the DEPT-135 spectrum zoomed in the range of 40-43 ppm.




^1H - ^1H COSY with inset

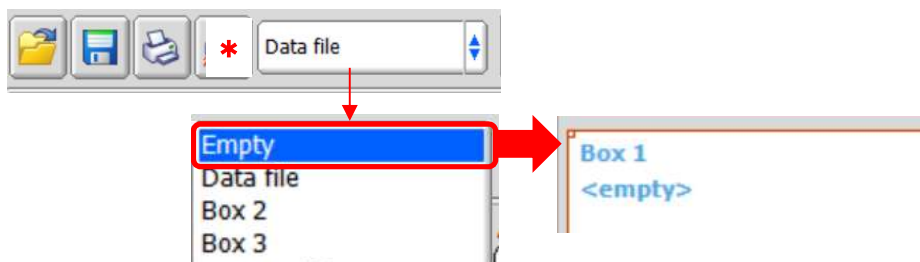


^{13}C (bottom) & DEPT-135 (top) with inset

How to save a layout :

It is possible to save a layout (template) in the *.pmt format as follows:

Select a data box and then select the **Empty** from the list (*) and click the **Save** button  .
When you connect a data box with other data boxes, set a source data to the **Empty**.

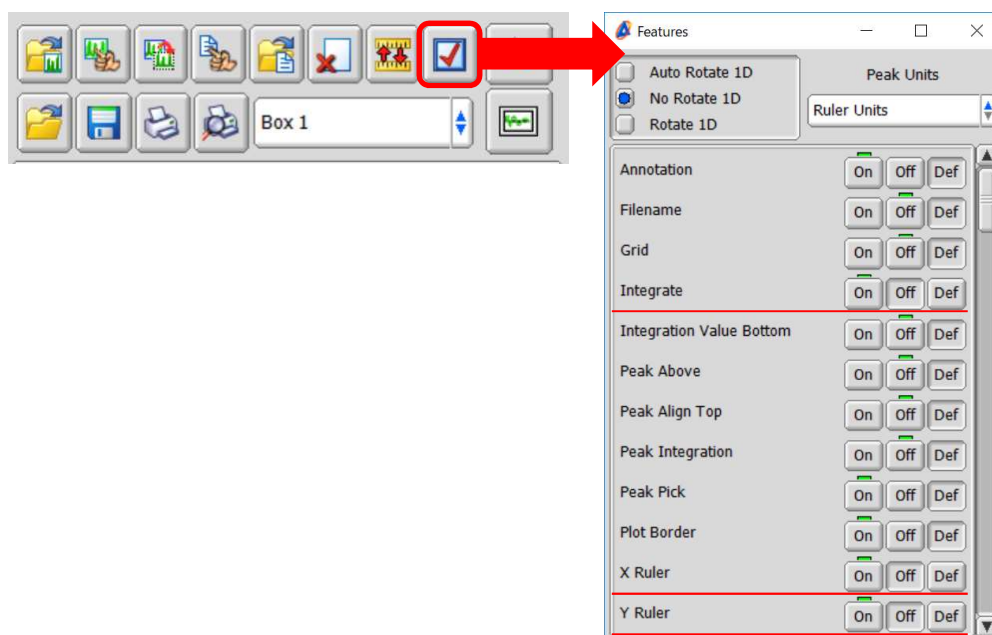


How to set features of data box:

It is possible to set features of each data box as follows:

Click the **Features** button to display the **Features** window. In the example below, we have selected **Integrate: Off**, **X Ruler: Off** and **Y Ruler: Off** to hide integrals, X ruler and Y ruler.

- ★ For the details of features setting, refer to the Delta Tips issue titled **How to Make a Print Layout (3)** (⇒NMDT_0070).

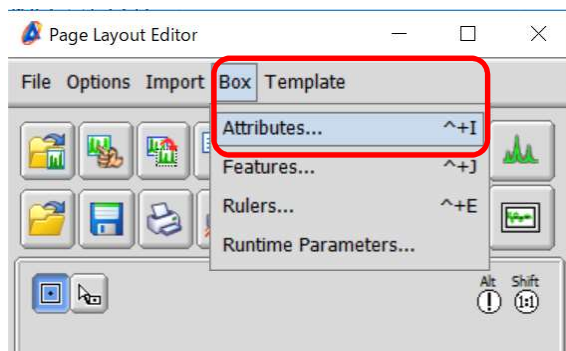


How to set font:

It is possible to set the size and style of a set of letters in a data box as follows:


Select **Box — Attributes** to open the **Attributes** window.

- ★ For the details of **Attributes** window, refer to the Delta Tips issue titled **Page Layout Editor (Part 1)** (⇒NMDT_0019).



How to use templates:

It is possible to use preset templates as follows:

Select **Template** or click the **Open Template** button  to open the **Open File** window and select the template of your choice.

★ Refer to the Delta Tips issue titled **Page Layout Editor (Part 2)** (⇒NMDT_0055).

