

# Delta Tips

NMDT\_0062

## How to Customize Display of Integrals

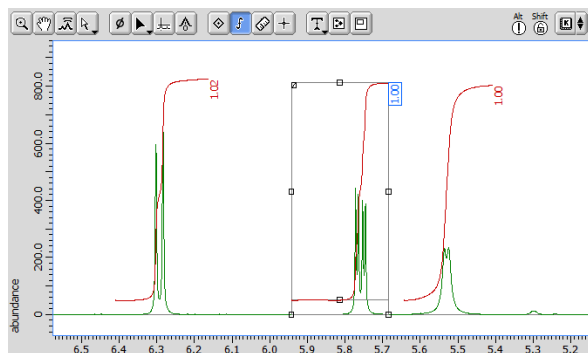
NMR data processing software

**Delta**  
NMR Software  
v5.0

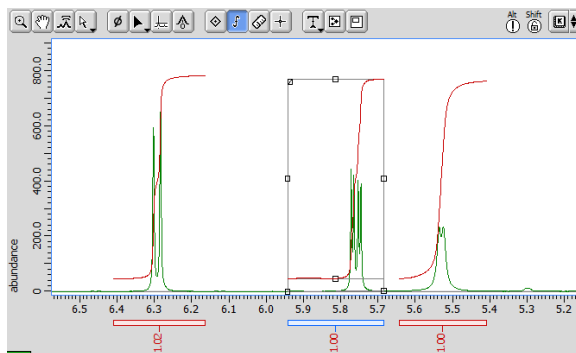


In Delta software, it is possible to customize the position of integral curve, the font size of the integral value and the colour of integral curve.

### Display Position



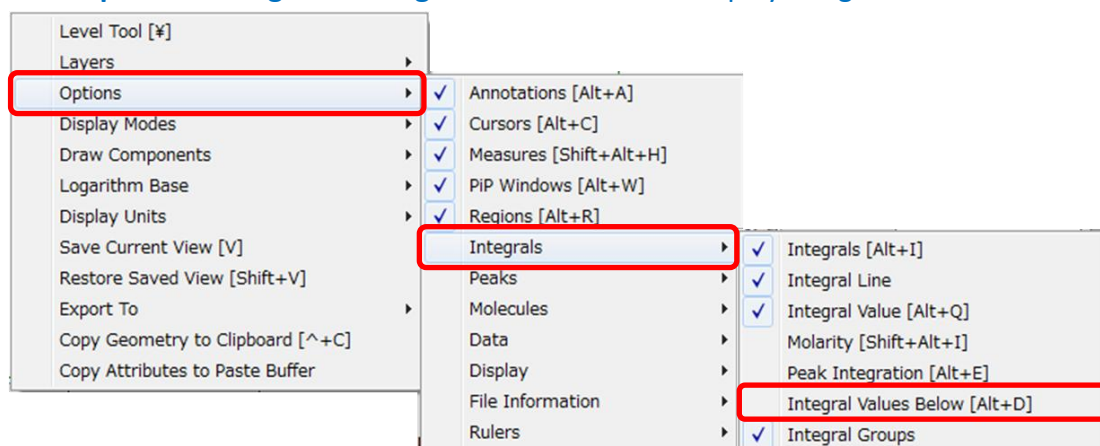
Default Position of Integral Values



Integral Values Below

Using the context menu:

- ① Push and hold the right mouse button to display the context menu.
- ② Select **Options — Integrals — Integral Values Below** to display integral values below the ruler.



Using the shortcut keys:

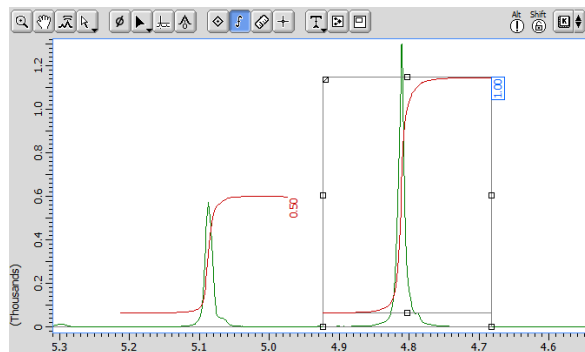
- ③ Push the shortcut keys **Alt** and **D** to change the display position of integrals values.

Using the preferences:

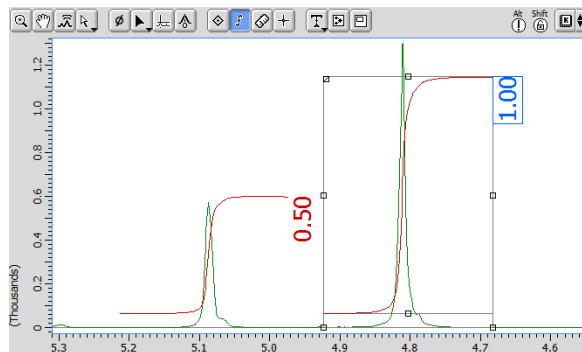
It is possible to change the default setting of the display position permanently.

- ④ In the **Delta Console** window, select **Options — Preferences** to open the **Preferences** window.
- ⑤ Click the **Data** tab and select the **Integral Values Below ON/OFF**.

## Font size



Default Font Size



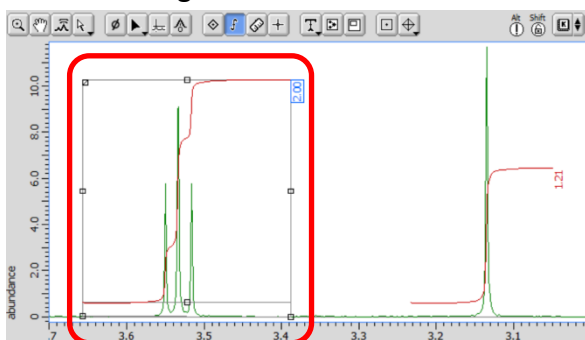
New Font Size

Using the preferences:

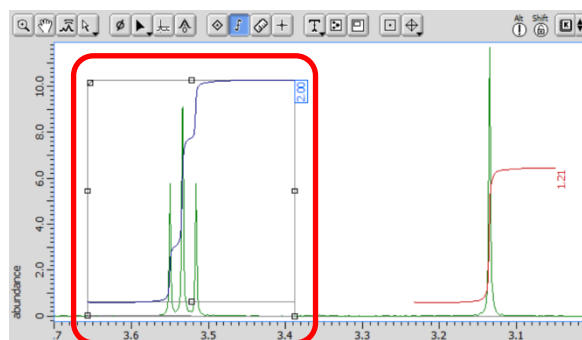
It is possible to change the default setting of the font size permanently.

- ⑥ In the **Delta Console** window, select **Options — Preferences** to open the **Preferences** window.
- ⑦ Click the **Geometry** tab and input the font scale into the **Peak/Integral Font Scale** box.

## Colour of Integral Curve



Default Colour of Integral Curve



New Colour of Integral Curve

Using the context menu:

- ⑧ Push and hold the right mouse button to display the context menu.
- ⑨ Select a colour from the **Color** list of the menu to change the colour of the integral curve.

Using the preferences:

It is possible to change the default colour of the integral curve permanently.

- ⑩ In the **Delta Console** window, select **Options — Preferences** to open the **Preferences** window.
- ⑪ Click the **Colors** tab and select a colour from the **Integral Color**.

★ It is also possible to adjust the number of digits after the decimal point.  
Refer to Delta Tips **Precision of Chemical Shifts and Integrals** (⇒NMDT\_0034).