

Delta Tips

NMDT_0055

Page Layout Editor (Part 2)

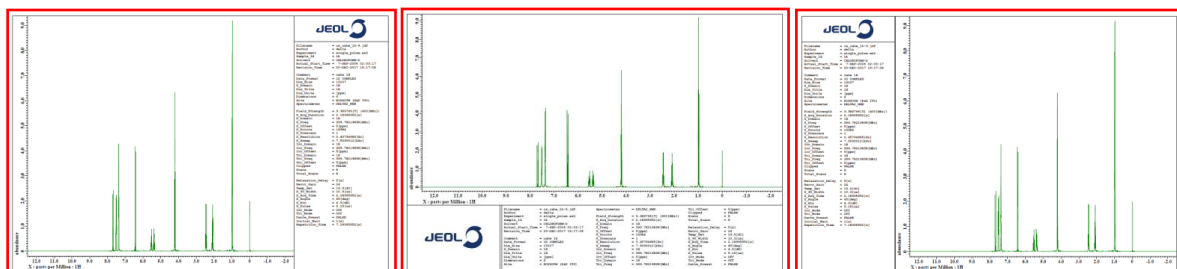
NMR data processing software

Delta
NMR Software
v5.0



< How to create report layout >

It is possible to create various report layouts with the **Page Layout Editor**. In the example below, we will demonstrate how to create report layouts by using the **report templates**.



Template: *Param Right*

Template: *Param Under*

Template: *Param Left*

- ① Select **Tools – Page Layout Editor** in the Data Slate or Processor window.
- ② To display parameters under a spectrum, select **Template – Param Under** template.
When this template is used, parameters are shown under the spectrum as shown above.

① Click **Tools** → **Page Layout Editor**

Tools menu – Page Layout Editor

② Click **Template** → **Param Under**

Logo area (Box 2)


Data area (Box 1)

Parameter area (Box 3)

Page Layout Editor: *Param Under*

③ Push the **Region** button  in the **Page Layout Editor** window.

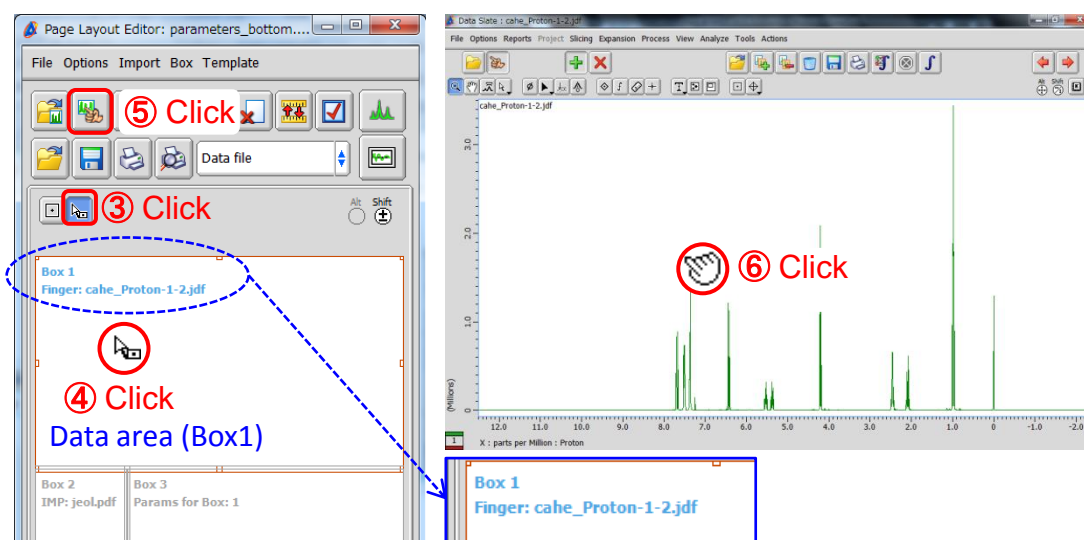
Note that the cursor has changed into the **Region symbol** .

④ Click the **Data area (Box 1)** with the cursor . The box frame has turned red and the area is ready to edit.

⑤ Push the **Data Select** button  in the **Page Layout Editor** window.

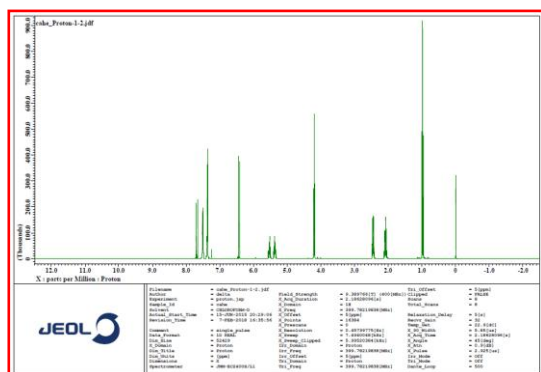
Note that the cursor has changed into the **Finger symbol** .

⑥ Click the data with the cursor  to load it into the Data area.



The data has been loaded

⑦ Push the **Print Layout** button  to print the spectrum to a printer or PDF file.



An example of ^1H spectrum printed with the **Param Under Template**

★ Push the **Open Template** button  to open another template.

