

# Delta Tips

NMDT\_0049

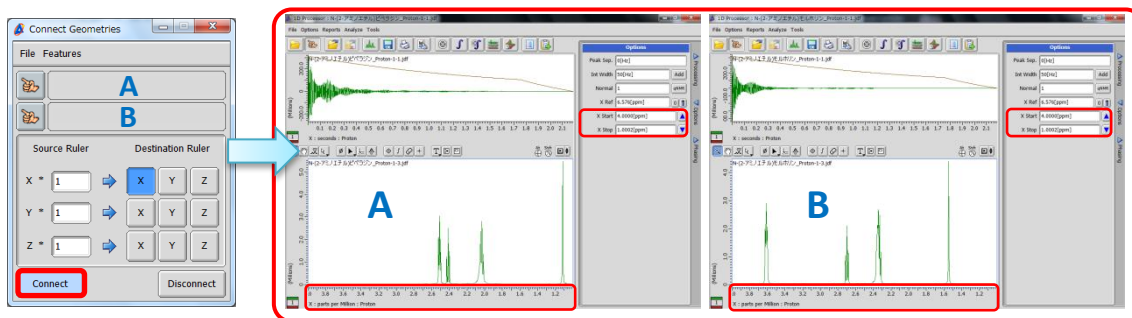
## Connect Geometries Function (1D)

NMR data processing software

Delta  
NMR Software  
v5.0



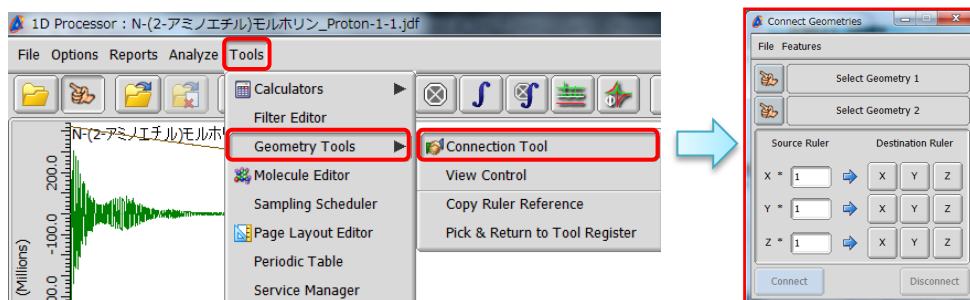
It is possible to synchronize display ranges between two **1D Processor** windows with the **Connect Geometries** function.



**Connect Geometries**  
window

**Spectrum A and Spectrum B** have been connected  
Chemical shift range: 1.0-4.0 ppm

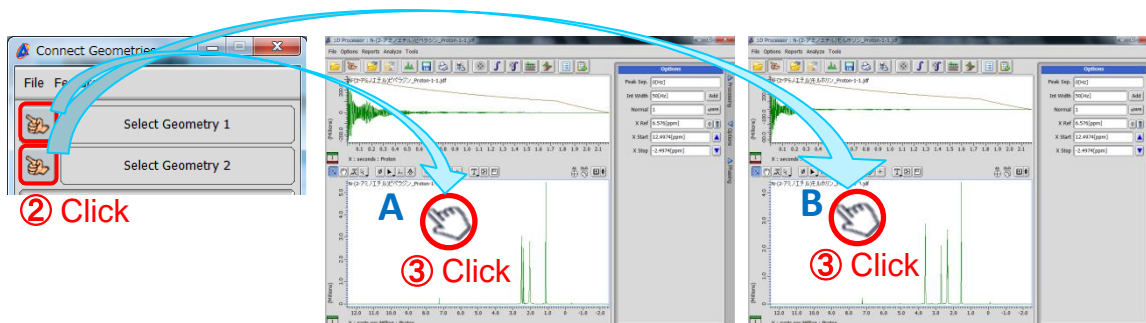
- ① Select **Tools — Geometry Tools — Connection Tool** to open the **Connect Geometries** window.



- ② Push the **Finger** button  to activate the data selection function.

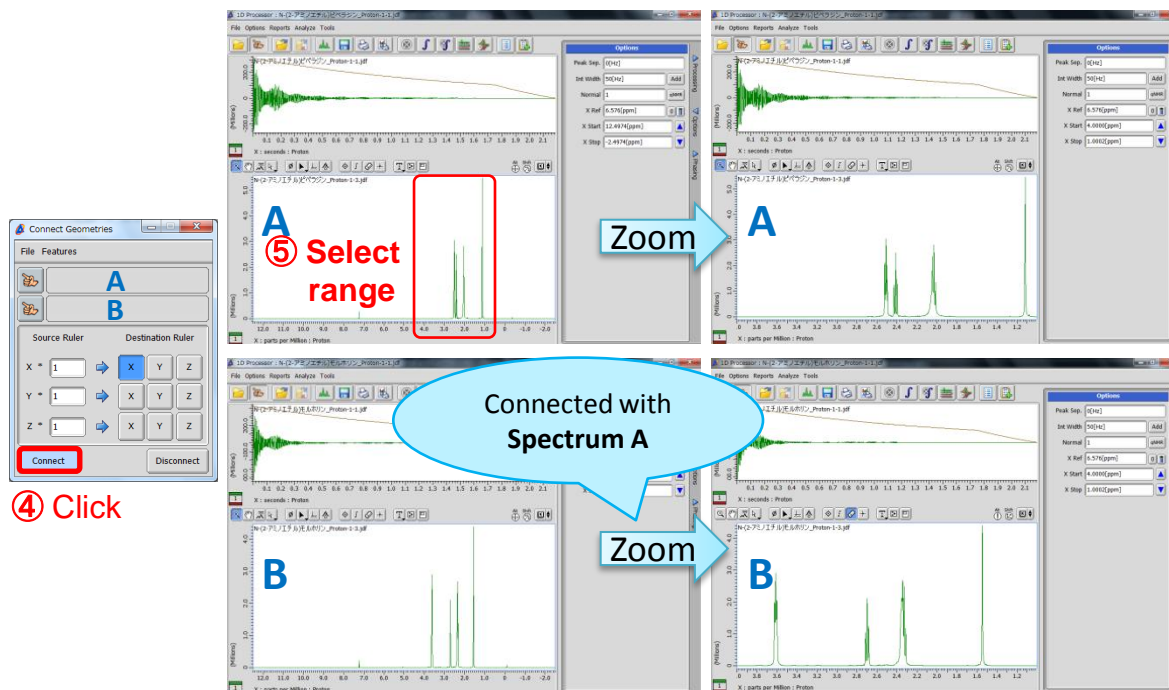
Note that the cursor has changed to the **Finger symbol** .

- ③ Assign **Spectrum A** as **Geometry 1** and **Spectrum B** as **Geometry 2** with the cursor.

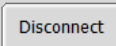


# Delta Tips

- ④ Push the **Connect** button  and ⑤ set the display range of **Spectrum A** as you wish. Note that the display range of **Spectrum B** has also changed.



The display range of **Spectrum B** automatically follows the display range of **Spectrum A**.

- ★ If you wish to disconnect the display ranges, push the **Disconnect** button .
- ★ The **Connect Geometries** function is also available in the **Data Slate** window.
- ★ In the **Data Slate** window, it is also possible to connect multiple spectra with the **Connect** function. Please refer to **NMDT\_0040**.