

Delta Tips

NMDT_0019

Page Layout Editor (Part 1)

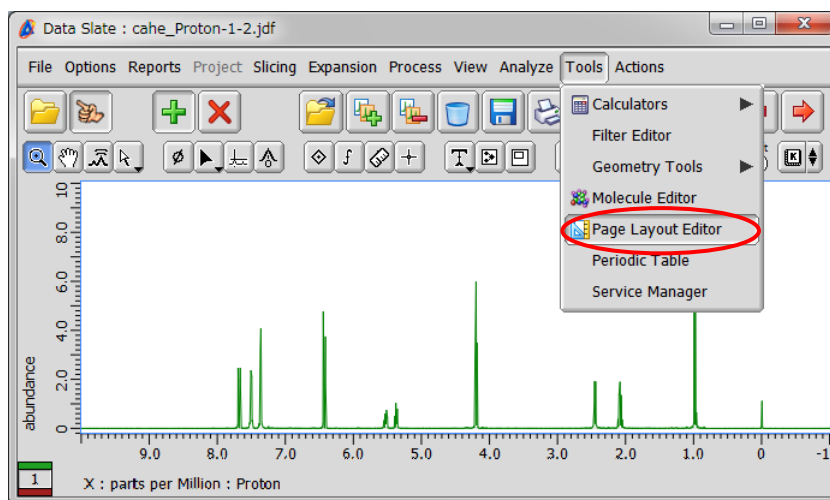
NMR data processing software



Delta
NMR Software
v5.0

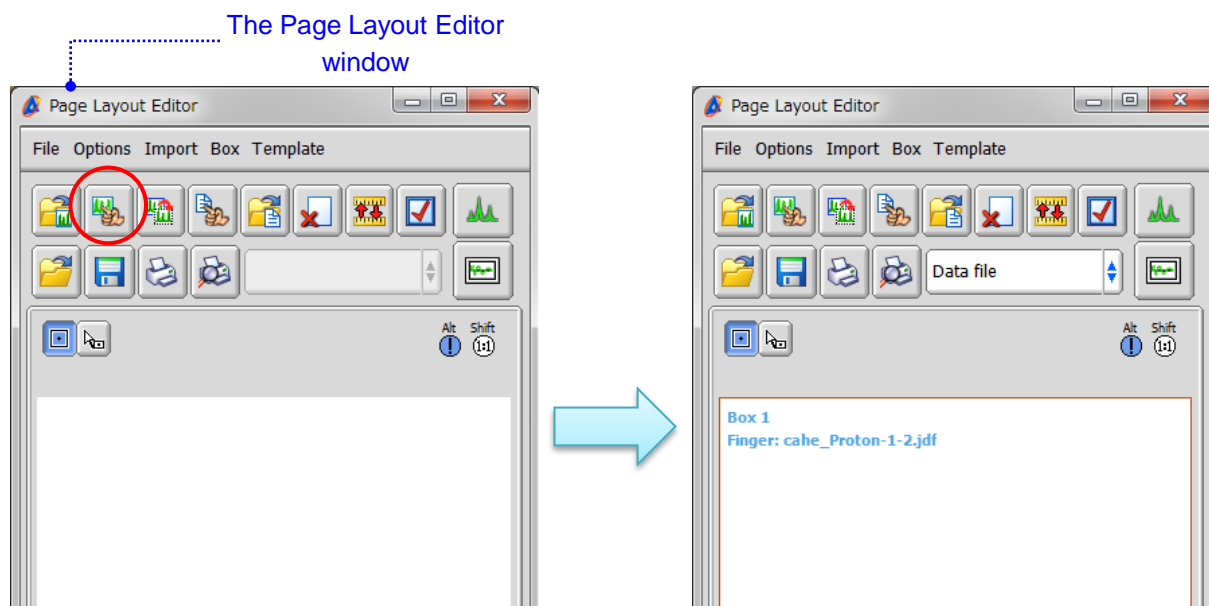


< How to change font style and font size >

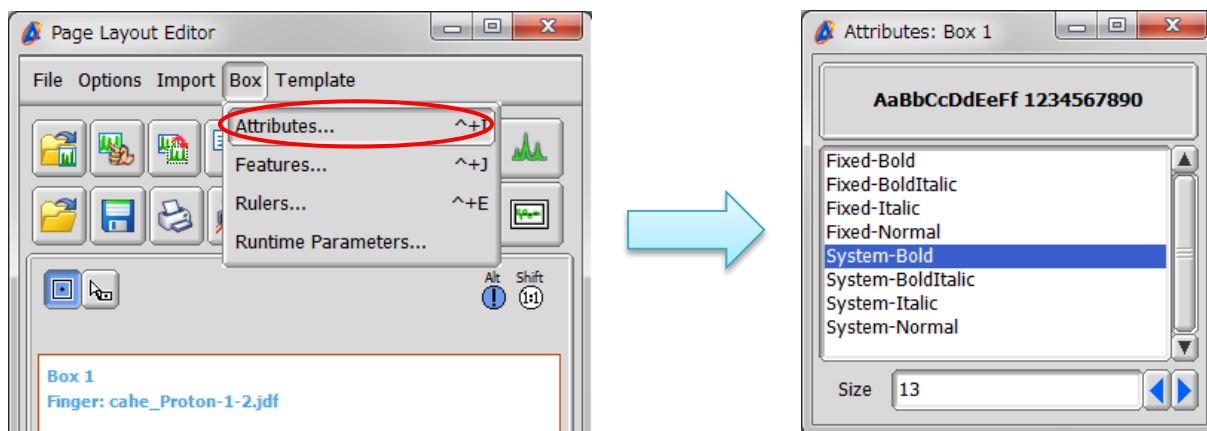
Font style and font size can be adjusted before printing a spectrum by using **Page Layout Editor**. To open this tool, select **Tools – Page Layout Editor** in the Data Slate or Processor window. The figure below shows a Data Slate window.



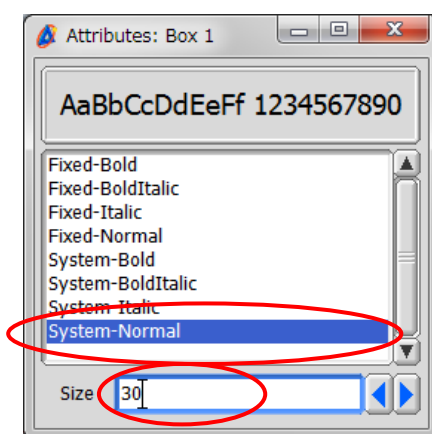
- ① Click the  button in the Page Layout Editor window to activate the 'finger' mode. After the cursor has turned into the  symbol, click inside the spectrum to load it.



- ② Select **Box – Attributes** to set font style and font size. The **Attributes** window opens.



- ③ Change font style and font size as shown in the figure below.



- ④ Click the  button to preview the spectrum or  to print it.

