

# Delta Tips

NMDT\_0012

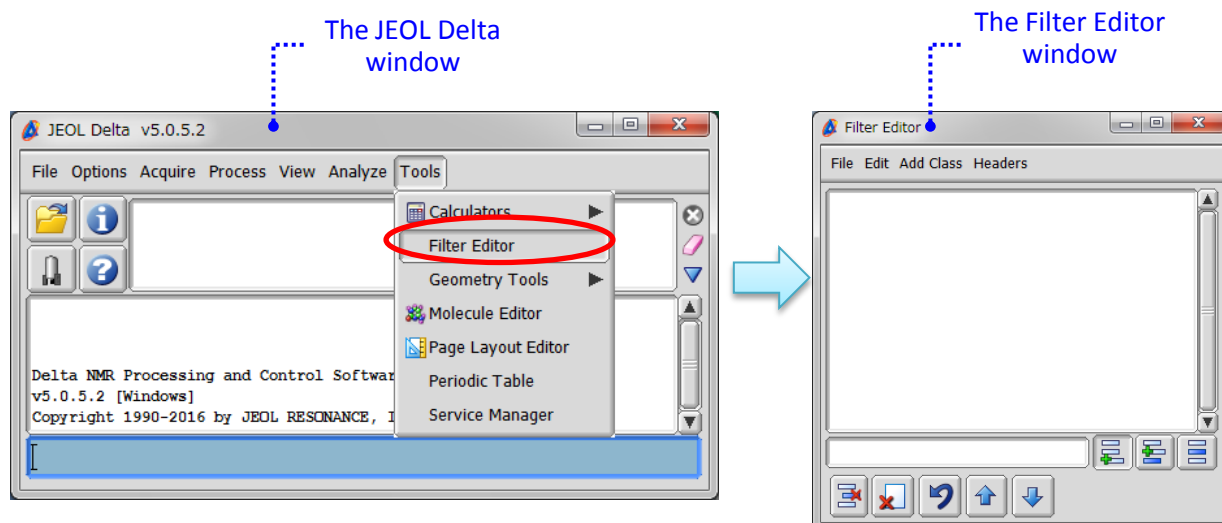
NMR data processing software

**Delta**  
NMR Software  
v5.0

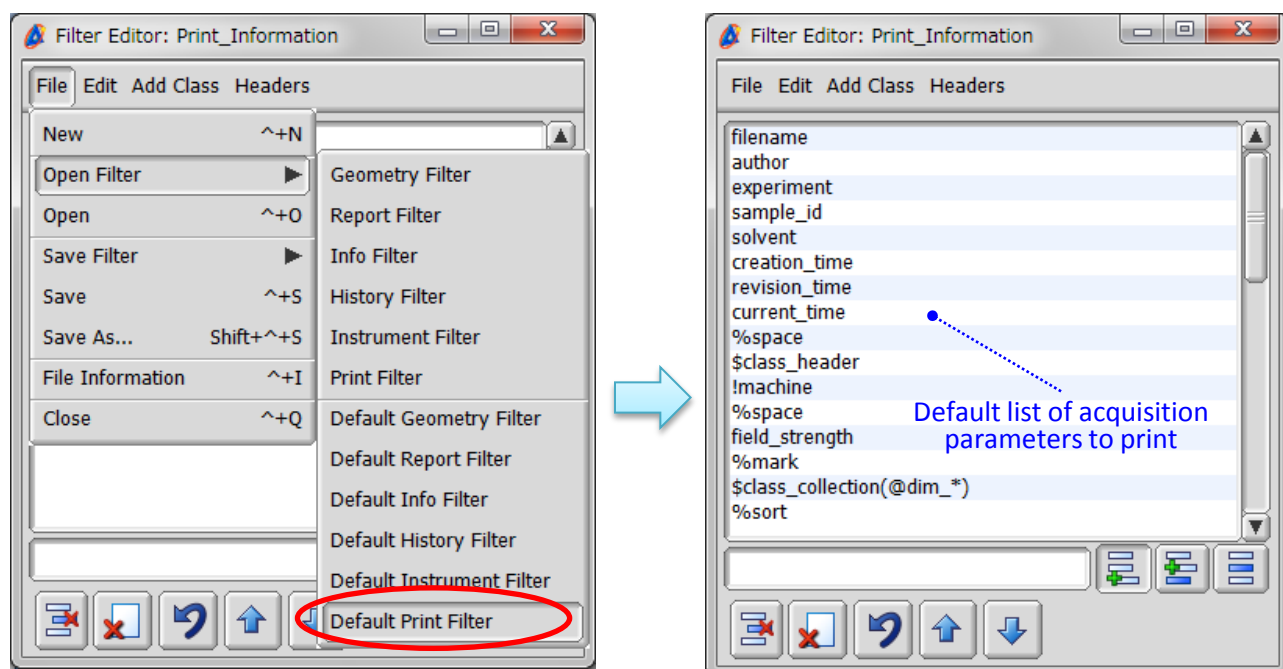


## How to Customize List of Parameters to Print (Part 1)

- ① Select **Tools – Filter Editor** in the JEOL Delta window.



- ② Select **File – Open Filter – Default Print Filter** in the Filter Editor window.



- ★ Refer to Delta Tips NMDT\_0013 for the names of available acquisition parameters.



For example, let us show you how to insert 'changer slot' above 'solvent'.

- Click the button and
- select 'solvent' in the list of parameters.
- Type in 'changer slot' in the empty box as shown in the figure below and push the **ENTER** key.

④ Select 'solvent'

③ Push the button

⑤ Input the name of parameter to add

★ To remove a parameter, select it and click the button.

- To save the modified list of acquisition parameters, select **File – Save Filter – Print Filter**.

File Edit Add Class Headers

- New ^+N
- Open Filter
- Open ^+O
- Save Filter
- Save ^+S
- Save As... Shift+^+S
- File Information ^+I
- Close ^+Q

- Geometry Filter
- Report Filter
- Info Filter
- History Filter
- Instrument Filter
- Print Filter**

Filename = cahe\_Carbon-1-2.jdf  
Author = delta  
Experiment = carbon.jxp  
Sample\_Id = cahe  
Changer Slot = 8  
Solvent = CHLOROFORM-D  
Creation\_Time = 21-NOV-2013 17:36:01

JEOL RESONANCE

Filename = cahe\_Carbon-1-2.jdf  
Author = delta  
Experiment = carbon.jxp  
Sample\_Id = cahe  
Changer Slot = 8  
Solvent = CHLOROFORM-D  
Creation\_Time = 21-NOV-2013 17:36:01

Relaxation\_Delay = 2[s]  
Recov\_Gain = 60  
Temp\_Set = 23.4[degC]  
X\_90\_Width = 11.3[us]  
X\_Acq\_Time = 0.8888608[s]  
X\_Angle = 30[deg]  
X\_Ain = 6.8[deg]  
X\_Pulse = 3.5656667[us]  
Irr\_Ain\_Dec = 25.374[deg]  
Irr\_Ain\_Nov = 25.374[deg]  
Irr\_Width = 92[us]  
Decoupling = WALTZ  
Initial\_Wait = 1[s]  
Nov\_Time = 2[s]  
Repetition\_Time = 2.888608[s]