

Delta Tips

NMDT_0010


Transfer Spectrum from 1D Processor to Data Slate

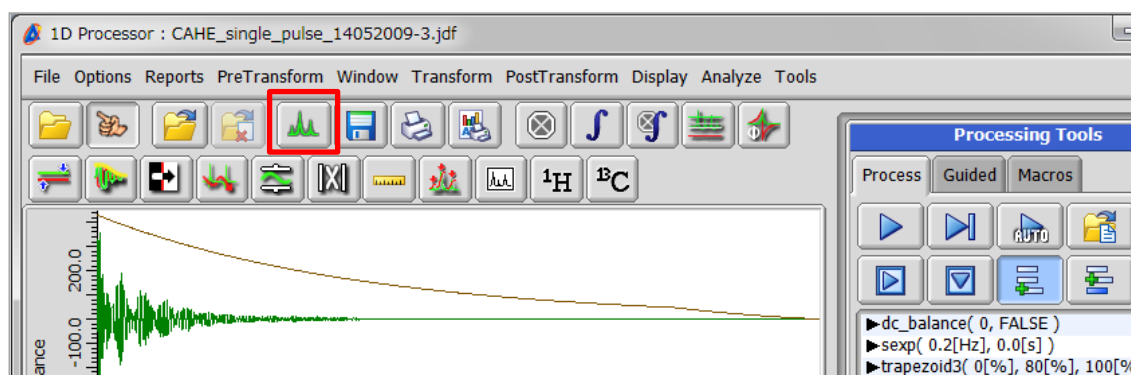
NMR data processing software

Delta
NMR Software
v5.0

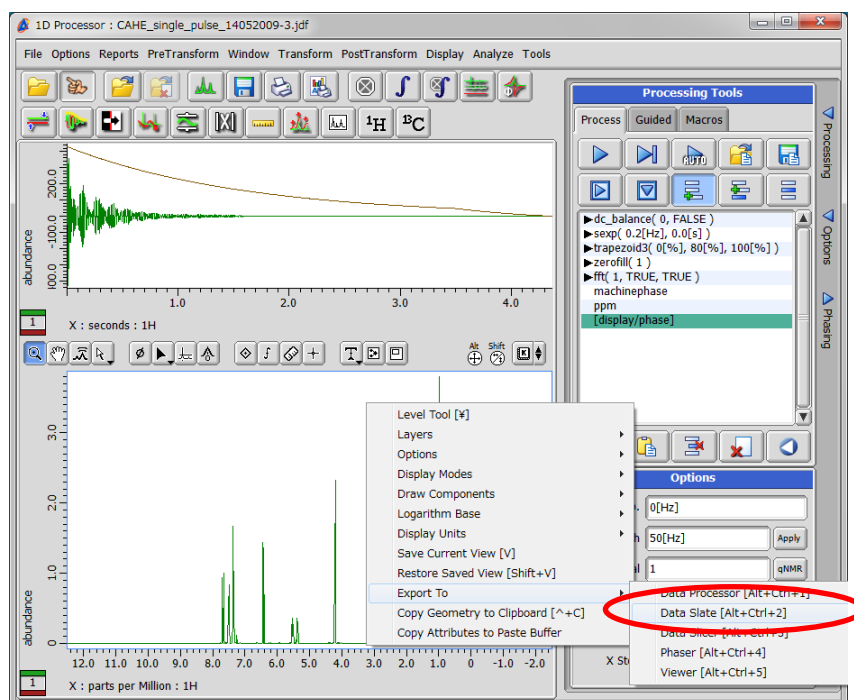


There are several ways to transfer a 1D spectrum from 1D Processor to Data Slate. This issue of Delta Tips shows two ways.

Method 1. Push the  button to open the data in a Data Slate window.



Method 2. Place the cursor within the area of the spectrum and push the right mouse button to open the pop-up menu. Select **Export To – Data Slate**. A keyboard shortcut for this action is the **ALT** key + **CTRL** key + **2** key.



Note: This way allows you to transfer the spectrum to several other tools.