

Delta Tips

NMDT_0007

Data Slate (Part 1)

NMR data processing software

Delta
NMR Software
v5.0

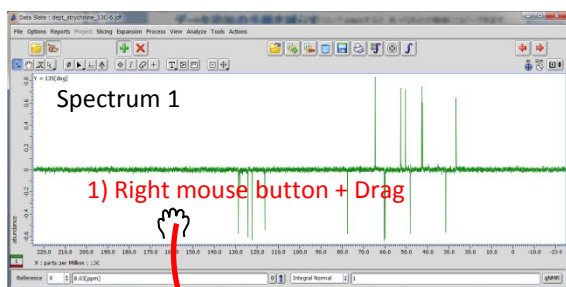


< Drag & Drop function >

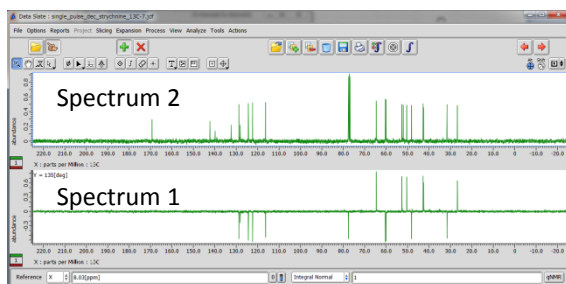
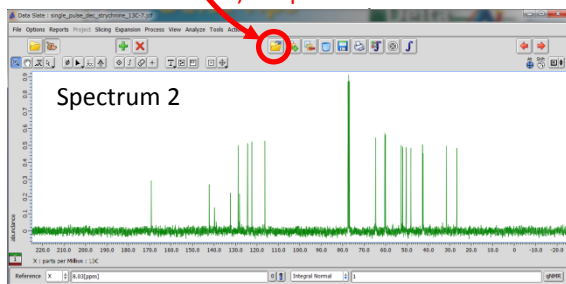
1 How to load multiple spectra into one Data Slate.


The Drag & Drop function can be used to display multiple spectra in a single Data Slate window. Depending on how you perform the Drag & Drop operation, the spectra are either displayed individually in two separate geometries (**Method A**) or overlaid in a single geometry (**Method B**). Follow the figures shown below.

Method A. To tile two spectra

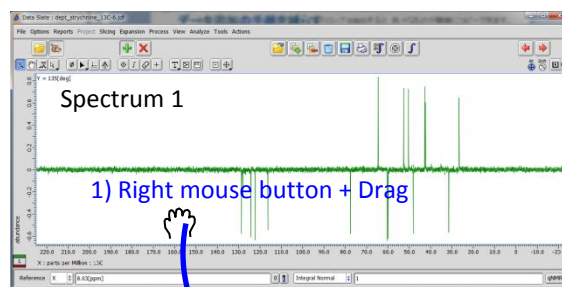


2) Drop me here

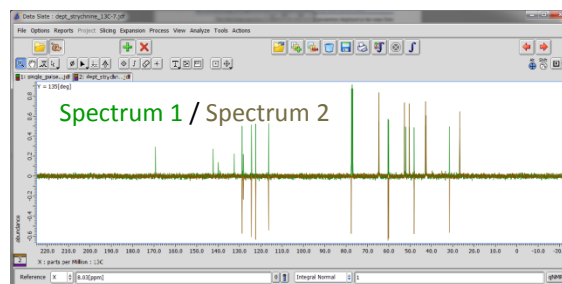
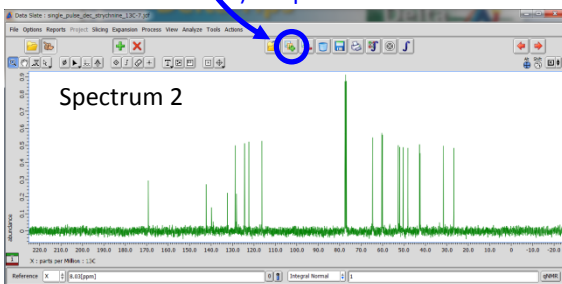



In this method, **Spectrum 1** has been dropped over the  button. As a result, the two spectra are tiled in one **Data Slate** window.

Method B. To overlay two spectra




2) Drop me here

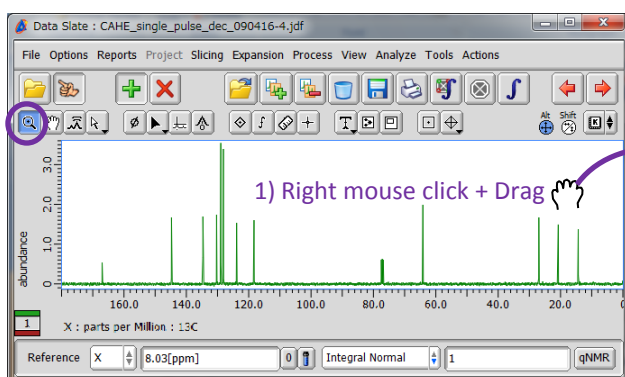


In this method, **Spectrum 1** has been dropped over the  button. As a result, the two spectra are overlaid in one **Data Slate** window.

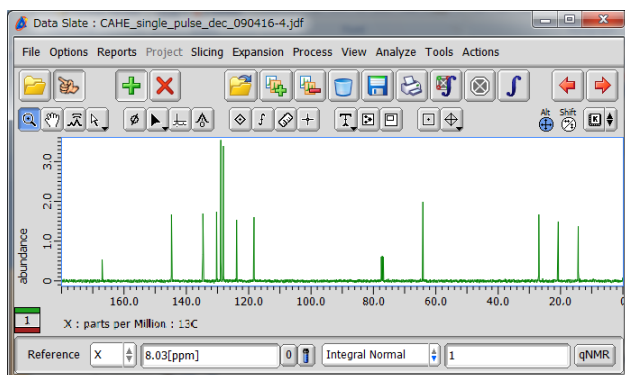
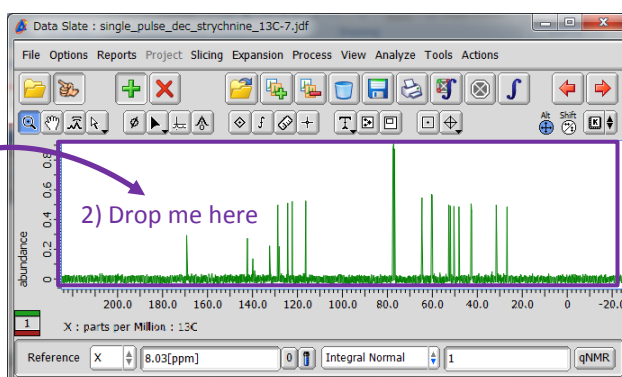
2 How to zoom two spectra identically.

The Drag & Drop function can be used to expand a spectrum in accordance with another one. First of all, click the  button to activate the **Zoom** mode in the template spectrum. **Spectrum 1** is the template in the example shown below. Next, push the right-mouse-button inside the area of **Spectrum 1** and drag it to **Spectrum 2**. Release the right-mouse-button when the cursor is inside the area of **Spectrum 2**.

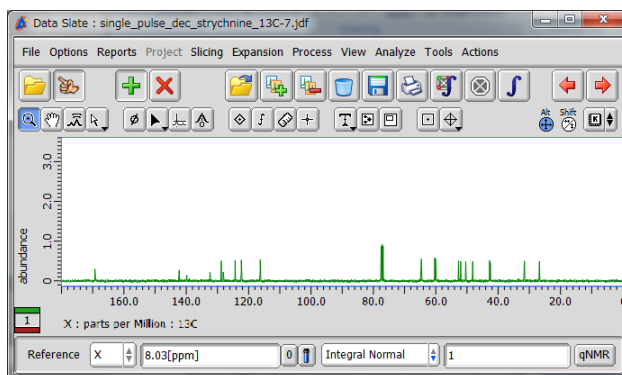
Spectrum 1 (Template)



Spectrum 2 (Target)



Spectrum 1 after Drag & Drop (no change)



Spectrum 2 after Drag & Drop

This method allows you to synchronize view ranges, including chemical shift range and intensity range, in two **Data Slates**. This is convenient if you wish to compare signal intensities, number of signals or chemical shifts between two spectra.