

Delta Tips

NMDT_0003

Filename (Part 1)

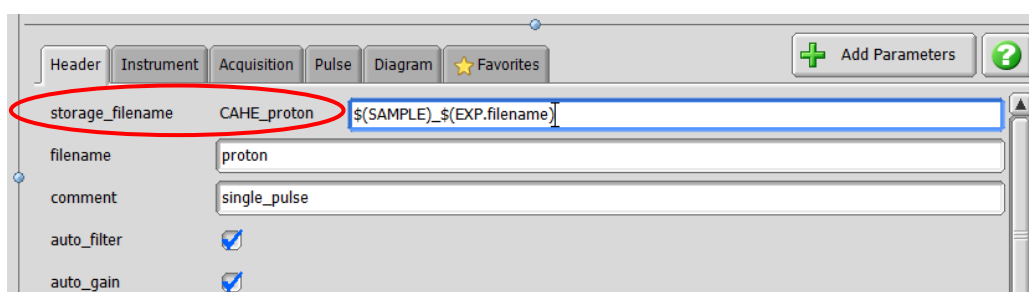
NMR data processing software

Delta
NMR Software
v5.0



1 How to customize filenames

JEOL NMR data are automatically saved in the JEOL data format (*.jdf) under the filename defined in the **storage_filename** input box in the Header tab. This input box can contain very useful strings. For example, if the **\$(SAMPLE)_\$(EXP.filename)** string is used, the **storage_filename** is 'sample-name_experiment-name'. In the figure below, the sample name is 'CAHE' while the experiment to be run is 'proton', and hence the **storage_filename** is 'CAHE_proton'.



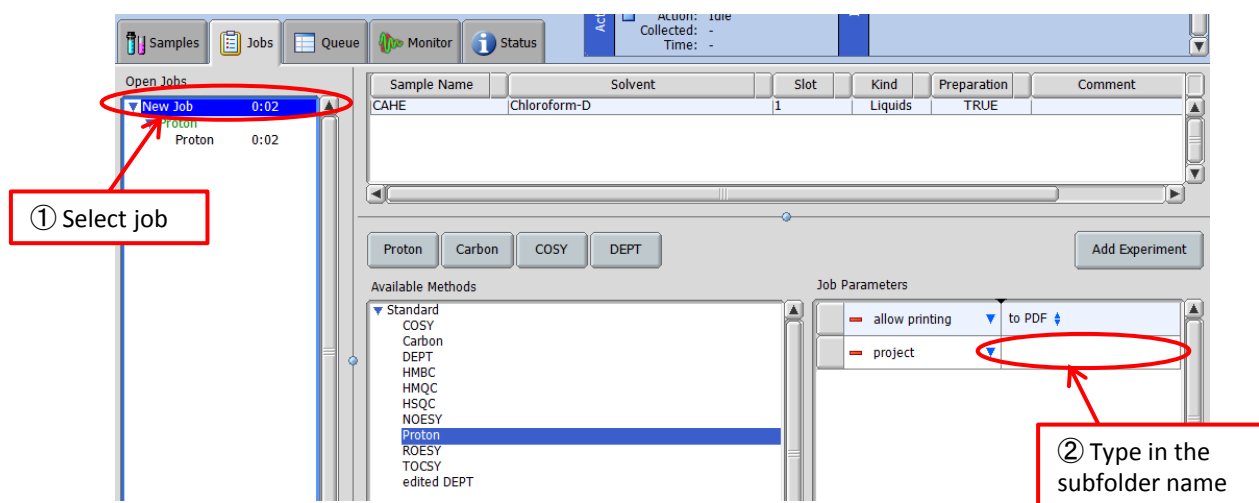
★ The **storage_filename** can also contain the date of experiment if you use this string:

\$(YEAR)\$ (MONTH_NUM)\$ (DAY_NUM)_\$(SAMPLE)_\$(EXP.filename)

★ Default value in the **storage_filename** input box can be set in **Config – Spectrometer Preferences – Environment – Filename Pattern**. See **3** for details. This method does not apply to automation.

2 How to save data files in particular folder

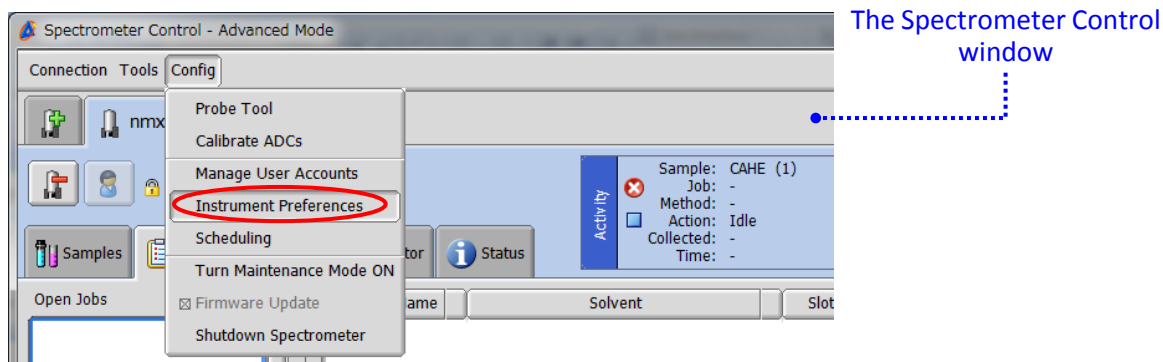
You can have your data files saved in a specified subfolder inside the **Data** folder. To do so, type the subfolder name into the **Project** input box of **Job Parameters** (see the figure below).



3 How to automatically include date in filename

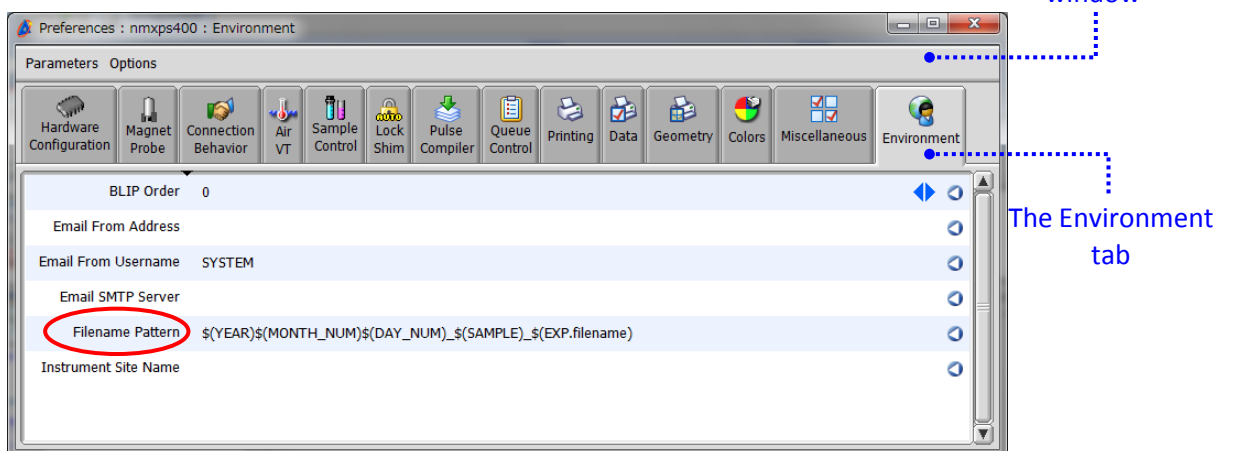
First of all, log in as the Administrator of the instrument.

① Select **Config – Instrument Preferences** in the Spectrometer Control window.

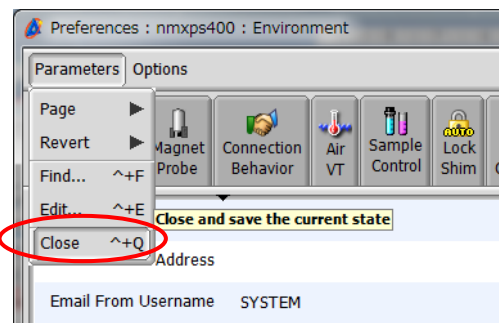


② Select the **Environment** tab. The parameter to modify is **Filename Pattern**.

If you input the $\$(YEAR)\$(MONTH_NUM)\$(DAY_NUM)_ \$(SAMPLE)_ \$(EXP.filename)$ string, the default **storage_filename** would be 'YYYYMMDD_sample-name_experiment-name' (for example, '20160623_CAHE_proton').



③ Select **Parameters – Close** to close the Instrument Preferences window.



! The method shown above does not apply to data files to be collected by the use of automation templates. The method only applies to data files to be collected in the manual mode.