

Delta Tips

NMDT_0001

File Browser (Part 1)

NMR data processing software

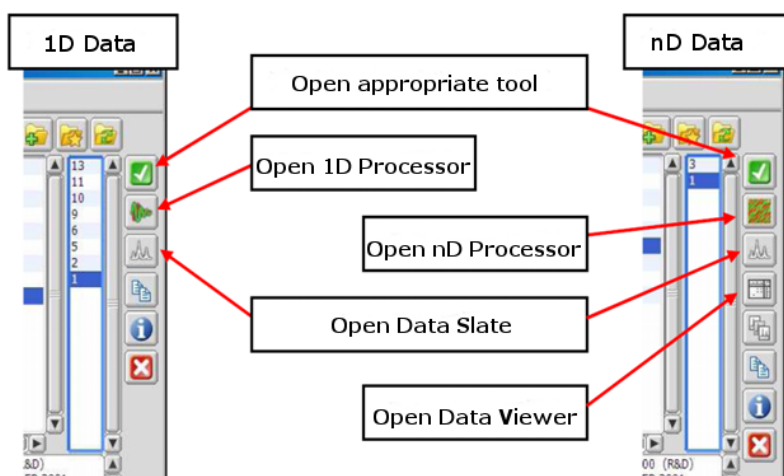
Delta
NMR Software
v5.0



< How to use File Browser >

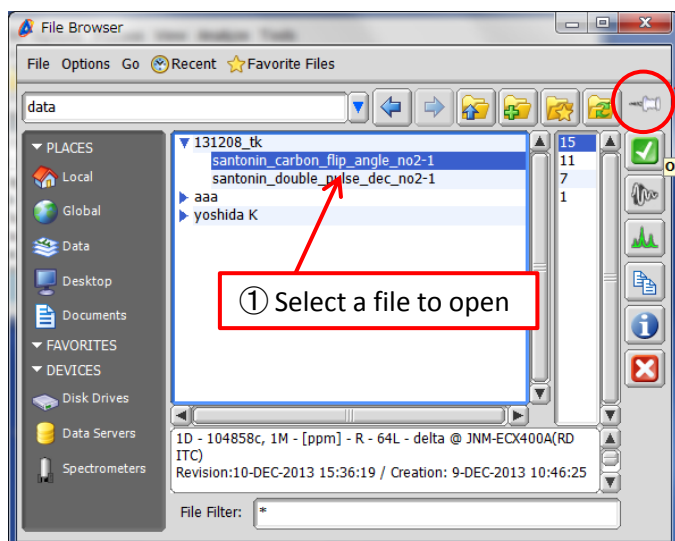
1 How to open data with desired data processors and viewers

When a data file is double-clicked in the File Browser window, an appropriate tool is automatically selected. For example, a 1D FID data file opens in the 1D Processor window, while a 1D Fourier-transformed spectrum opens in the Data Slate window. You can open selected data files in the desired tools by clicking appropriate icons (see the figure below).



2 How to open multiple files

When you open a data file using the File Browser window, it automatically closes. If you wish to keep the File Browser window open, click the white pin (see the figure below). It turns to blue and the File Browser window remains open no matter how many data files you open.



2 Click the white pin



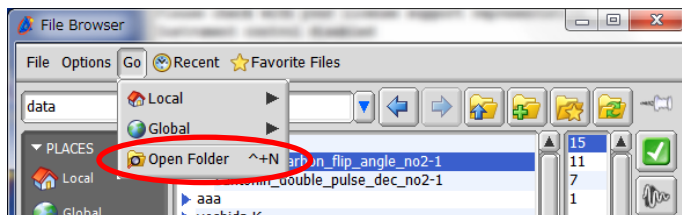
In this state, the File Browser window closes when you open a data file.



In this state, the File Browser window does not close when you open a data file.


3 How to display current folder in Windows Explorer

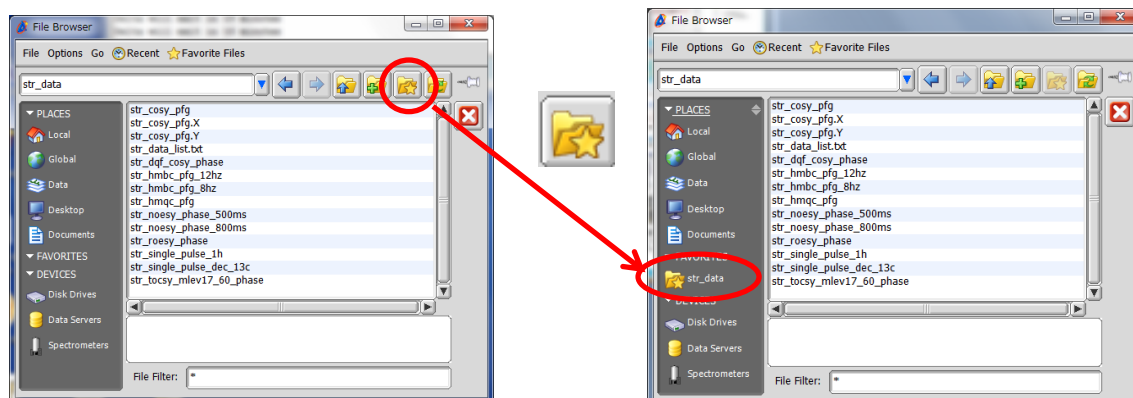
Current folder can be displayed in Windows Explorer (Win OS) by selecting **Go – Open Folder**.




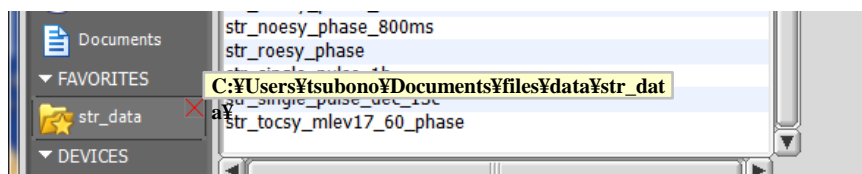
! This does not apply to folders inside the data server.

4 How to create shortcut to current folder

If you click the  button, a shortcut to the current folder is automatically added to Favorites.



If you place the cursor on the shortcut and hold a right-mouse-button, the full pathway is displayed. The shortcut can be deleted by clicking the red cross .



To change the order of **PLACES**, **FAVORITES** and **DEVICES**, click the grey switch on the right side. To open or close the contents of groups, click on the names of groups or white triangles on the left side.

