

Delta Tips

NMDT_0009

Chemical Shift Referencing in 2D

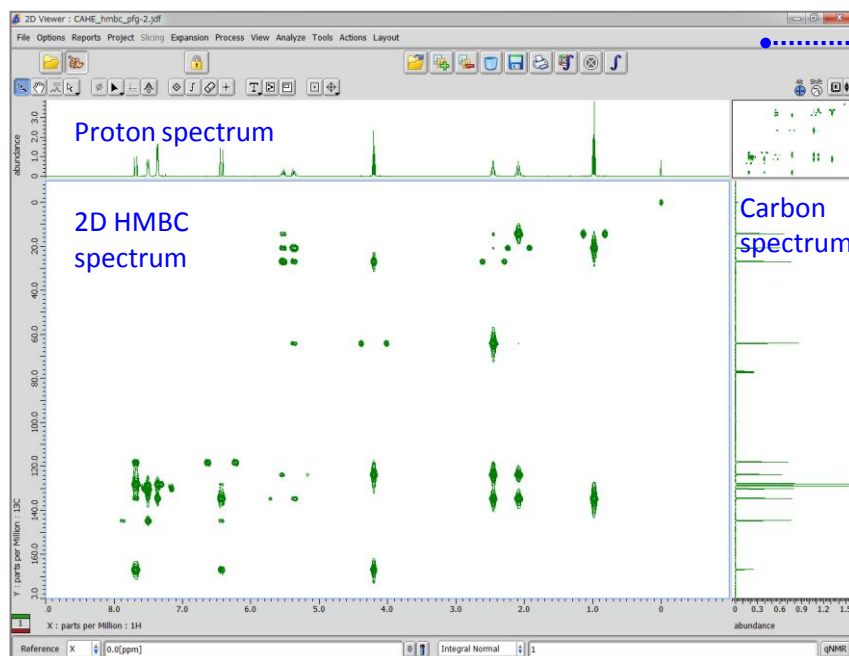
NMR data processing software

Delta
NMR Software
v5.0



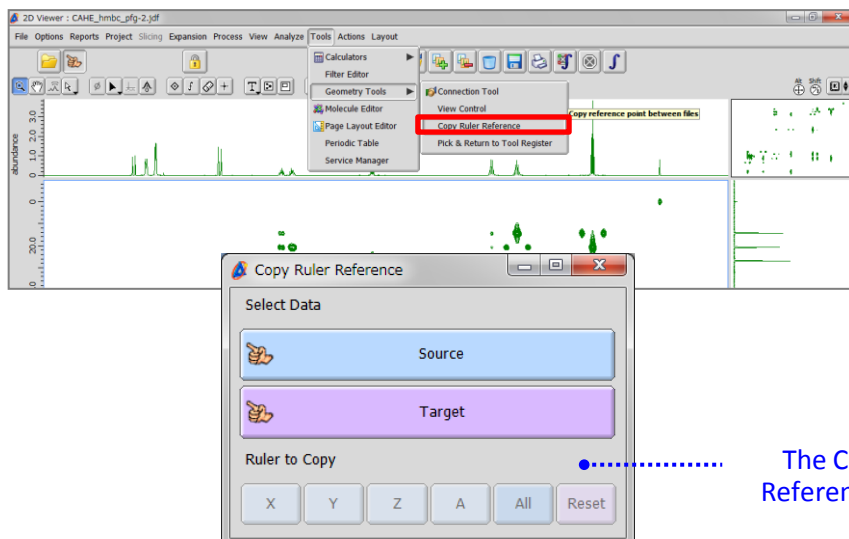
< How to copy chemical shift reference from 1D to 2D data >

This issue of Delta Tips shows how to copy chemical shift reference from a 1D spectrum to a 2D spectrum after the 1D spectrum has been referenced in the usual way.



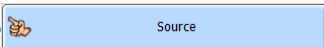

The 2D Viewer window

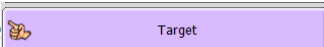
① Select **Tools – Geometry Tools – Copy Ruler Reference** in the 2D Viewer window.

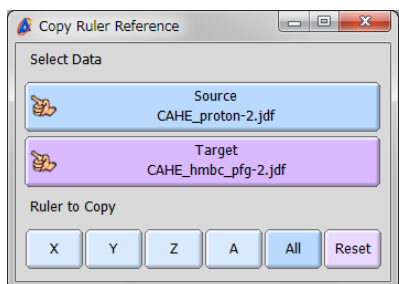
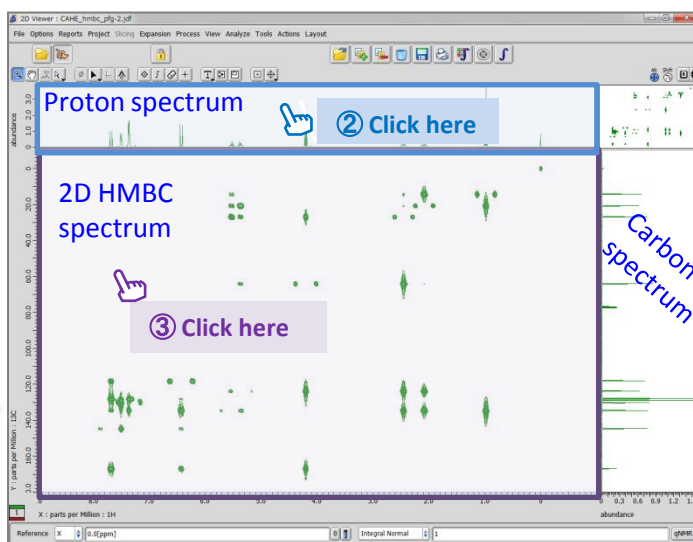
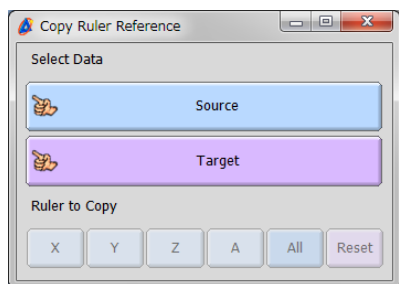


The Copy Ruler Reference window

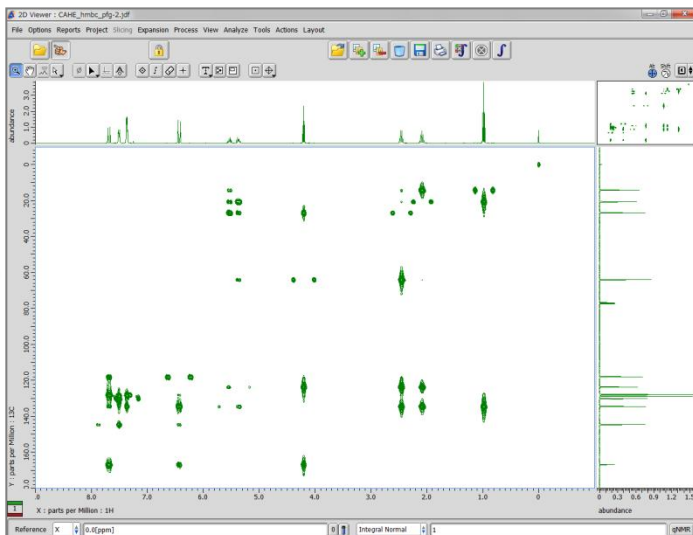
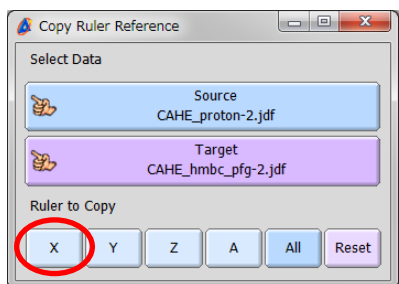
Delta Tips

② Click the  button in the Copy Ruler Reference window and then click inside the **proton spectrum**. Note that cursor temporarily changes to the  symbol. This operation assigns the **proton spectrum** to be the source of reference.

③ Click the  button in the Copy Ruler Reference window and then click inside the **2D spectrum**. This operation assigns the **2D spectrum** to be the target of reference.



④ Click the  button.



⑤ Repeat Steps ②-④ for the **carbon spectrum** and Y-dimension of the 2D spectrum.